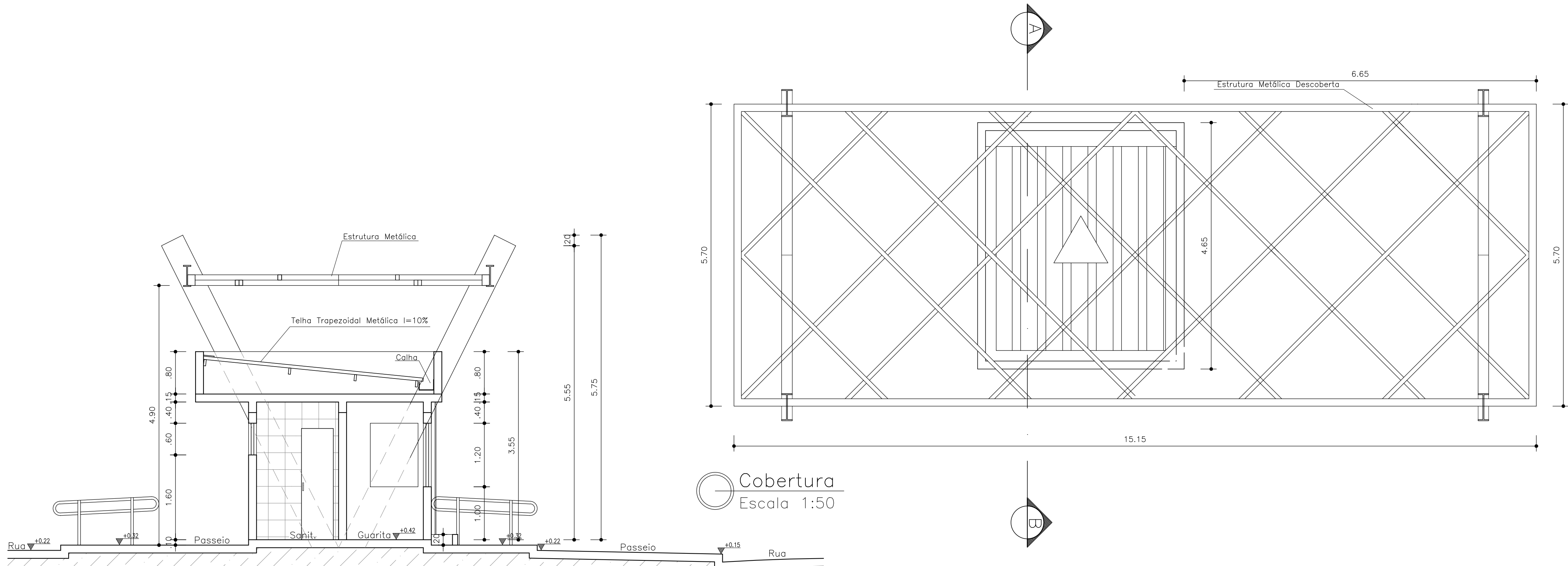
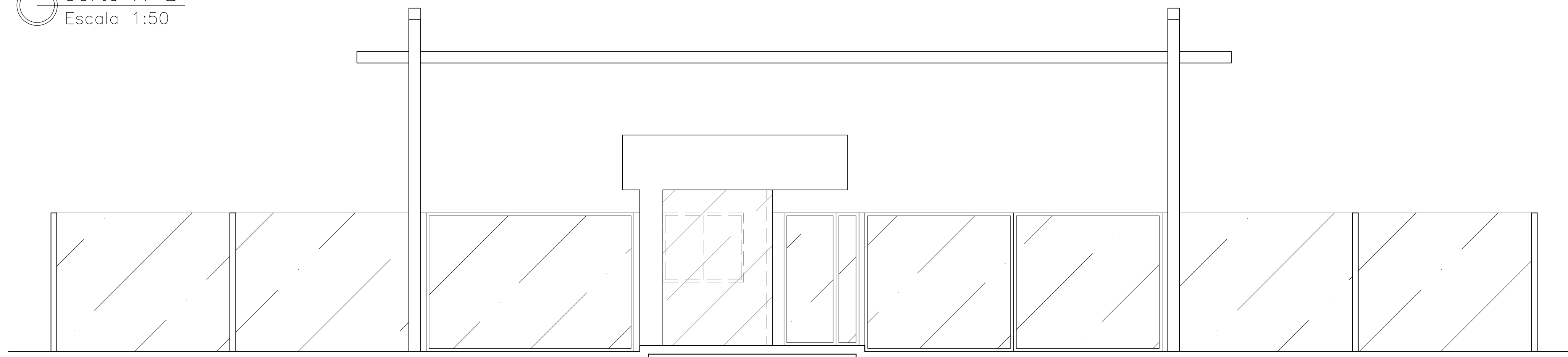


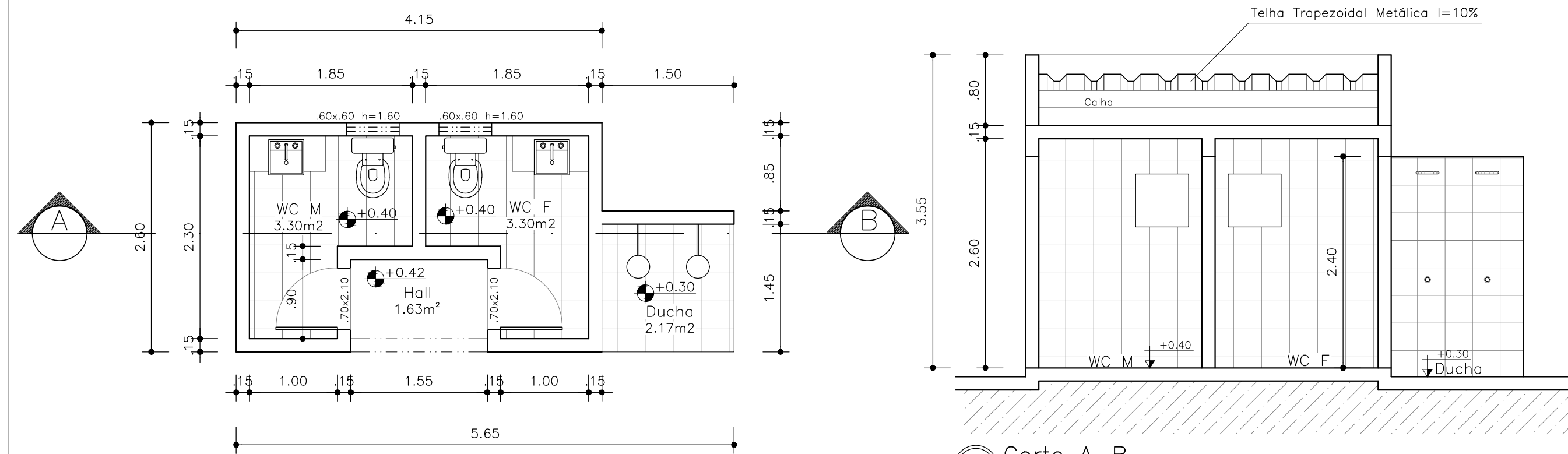
Planta Baixa Guarita
Escala 1:50



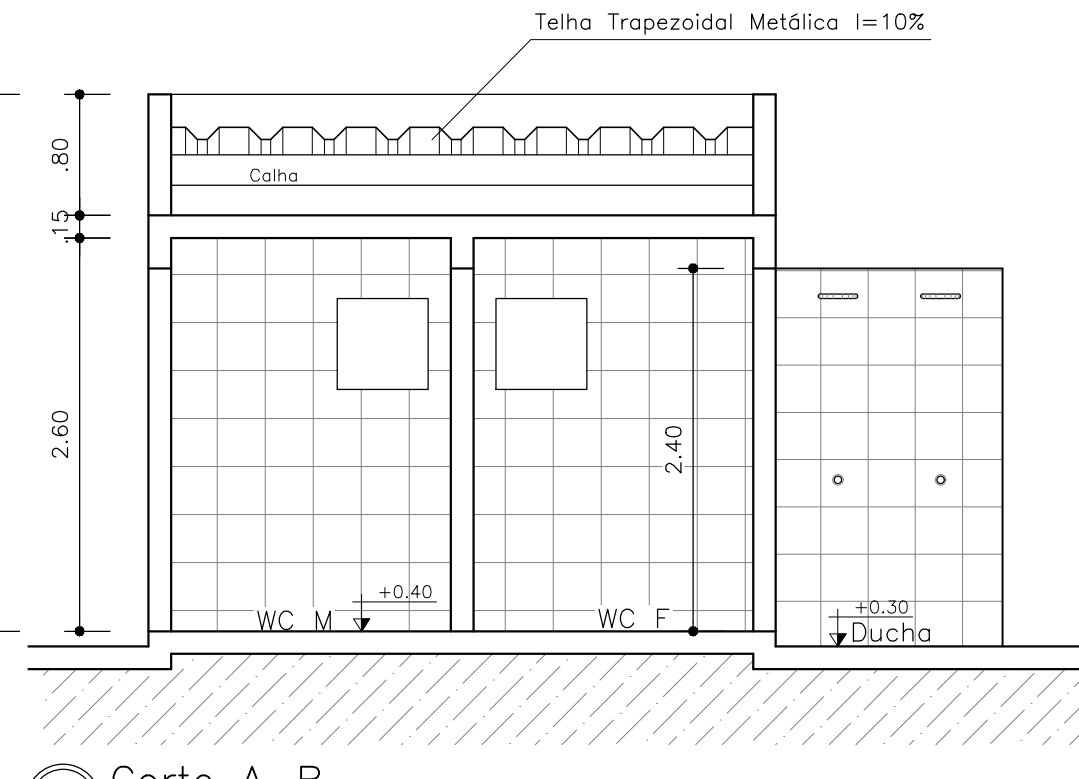
Corte A-B
Escala 1:50



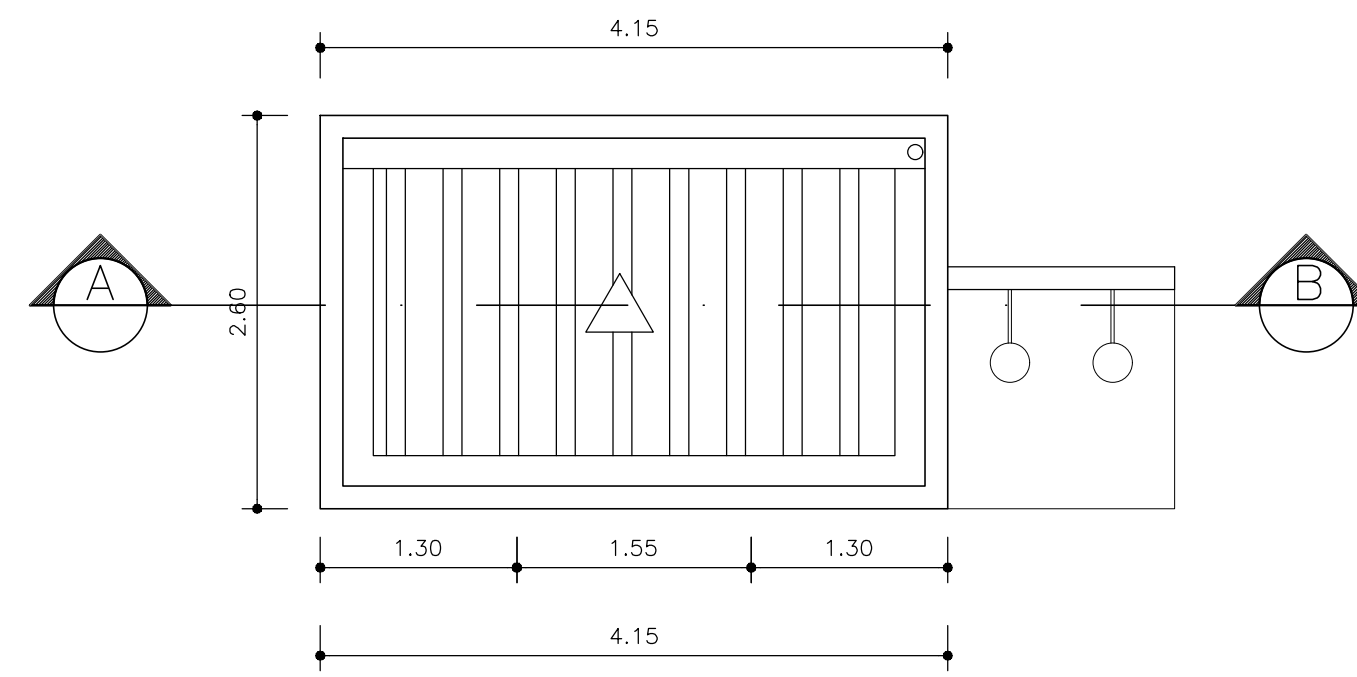
Fachada Frontal
Escala 1:50



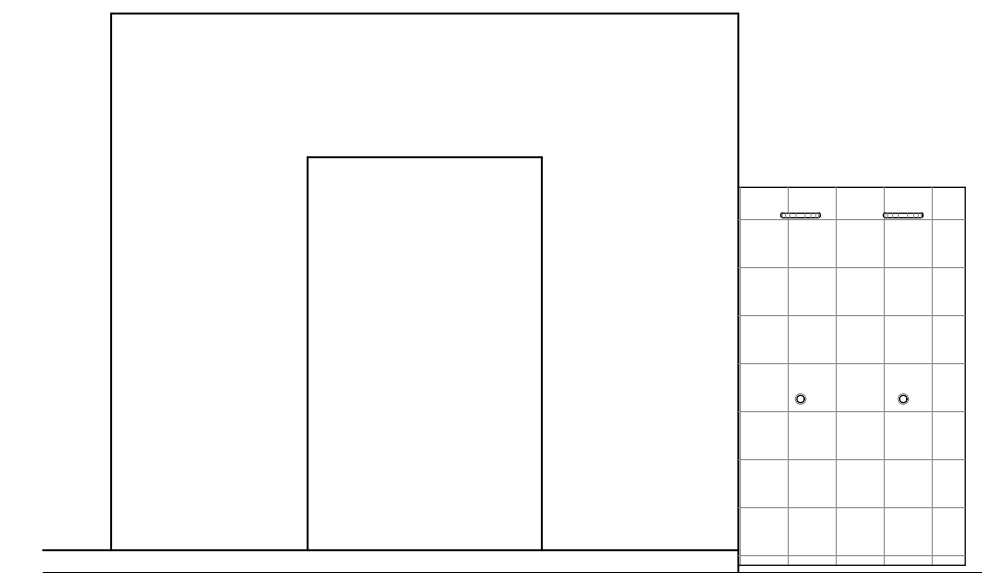
Planta Baixa Sanitários
Escala 1:50



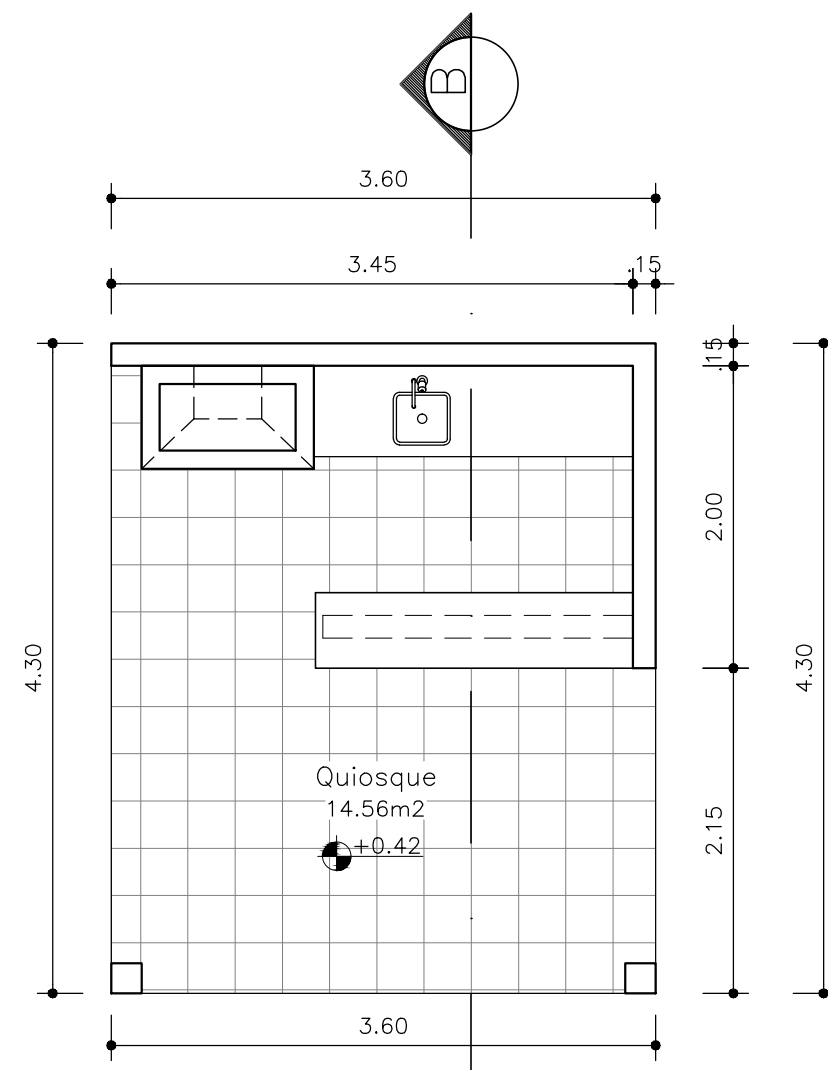
Corte A-B
Escala 1:50



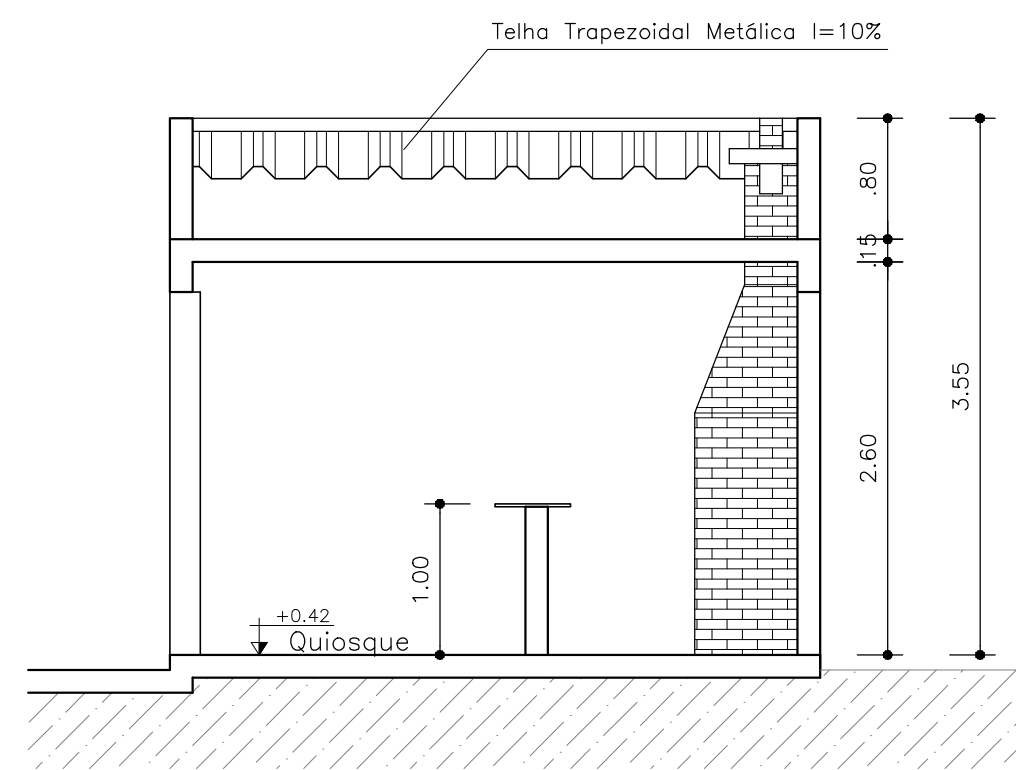
Cobertura
Escala 1:50



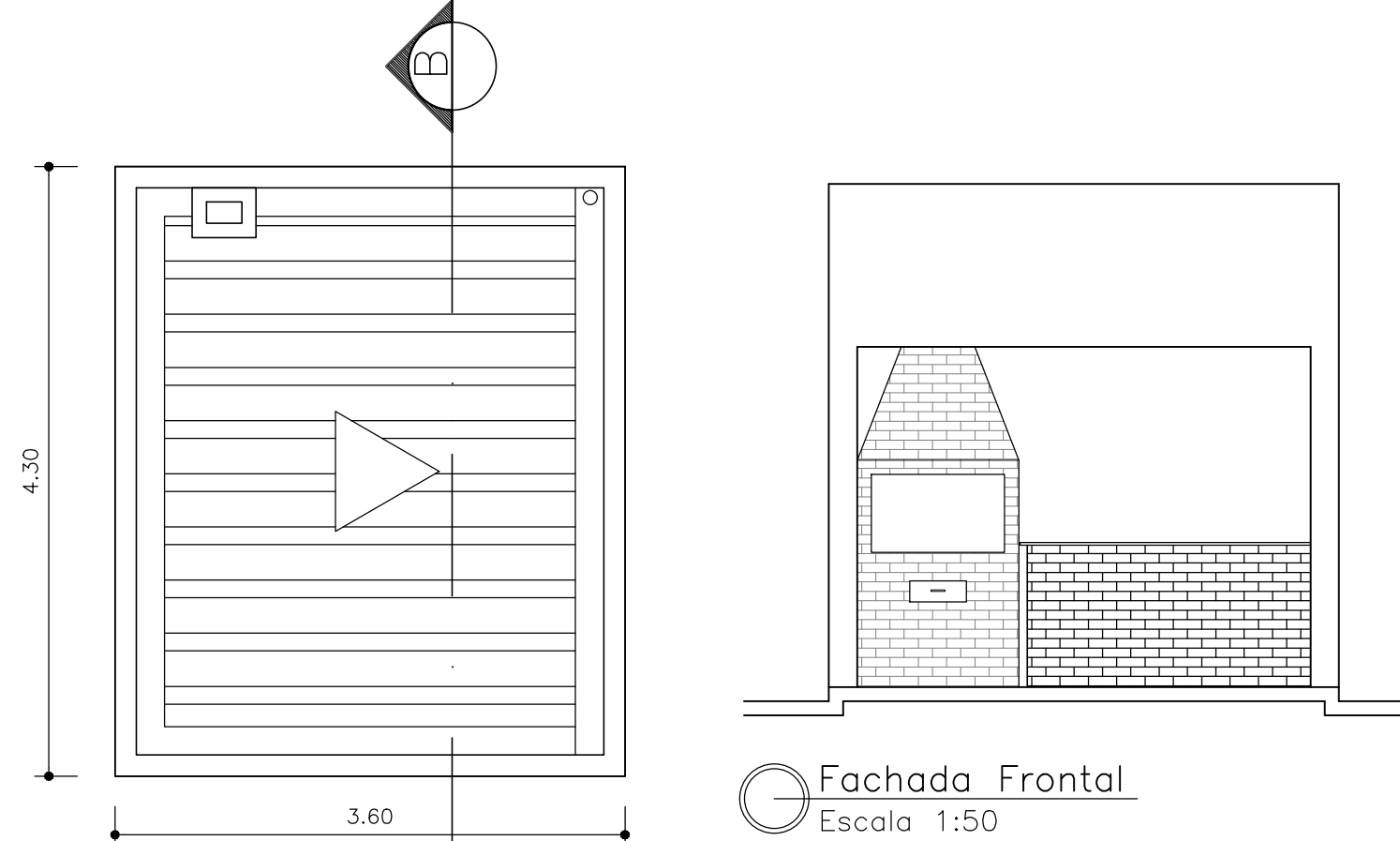
Fachada Frontal
Escala 1:50



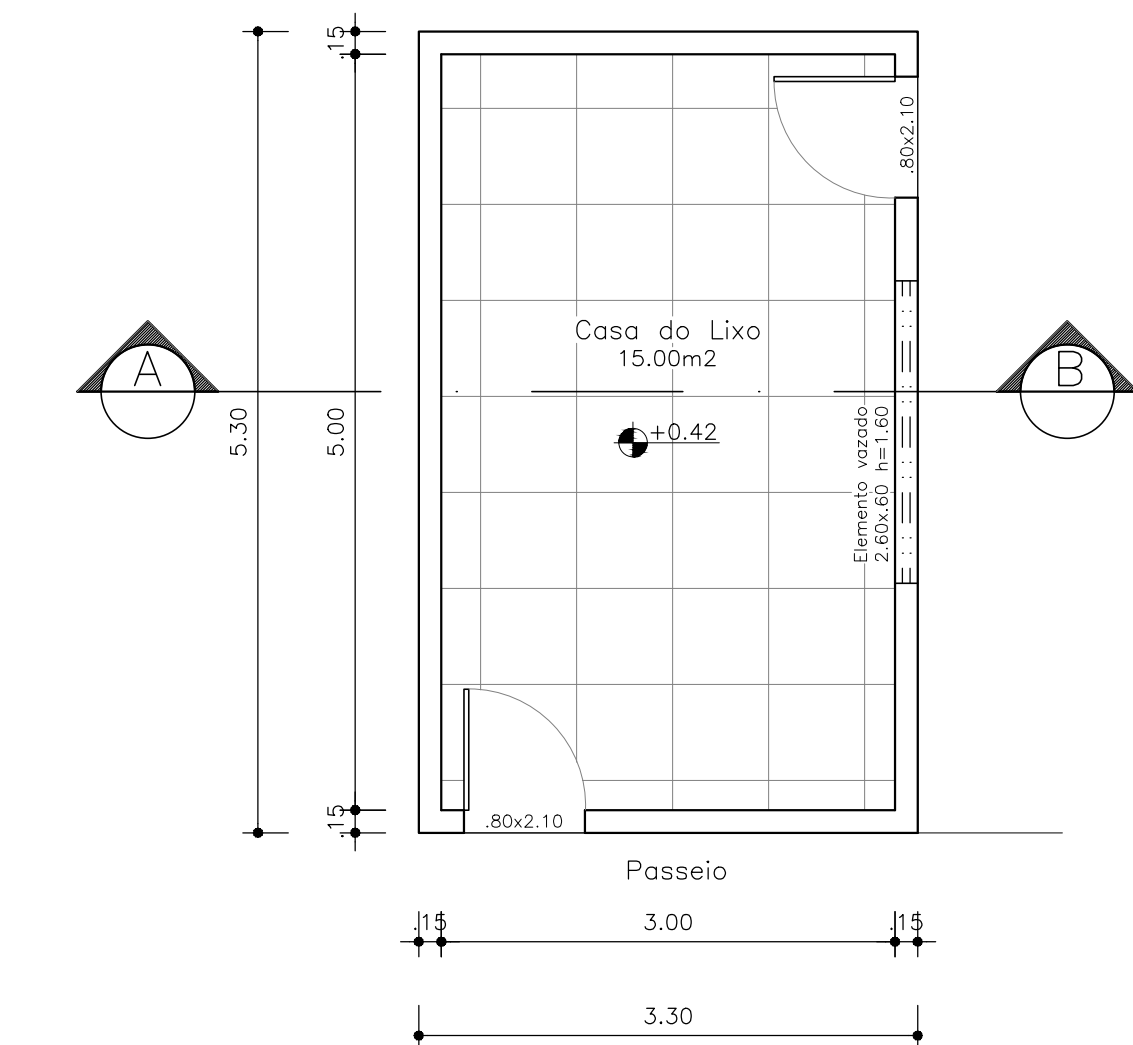
Planta Baixa Quiosque
Escala 1:50



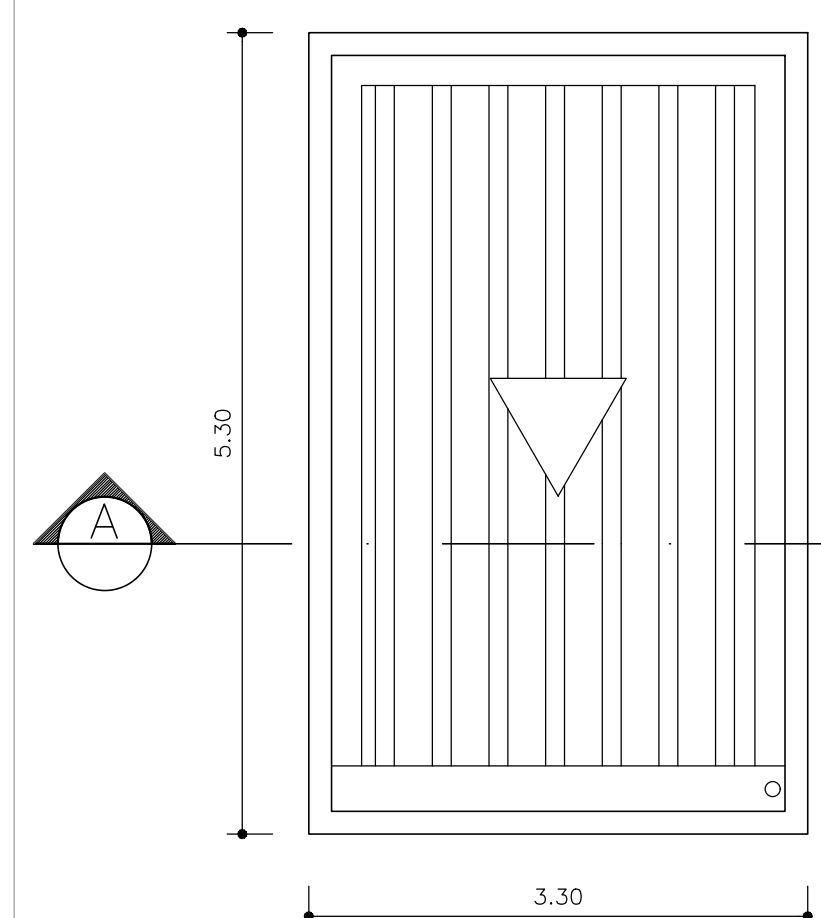
Corte A-B
Escala 1:50



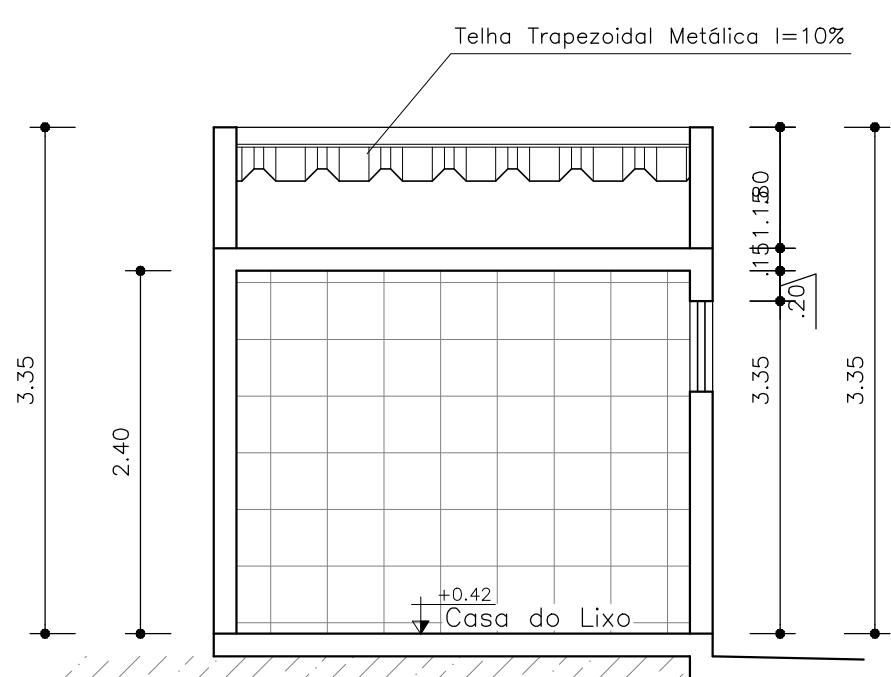
Cobertura
Escala 1:50



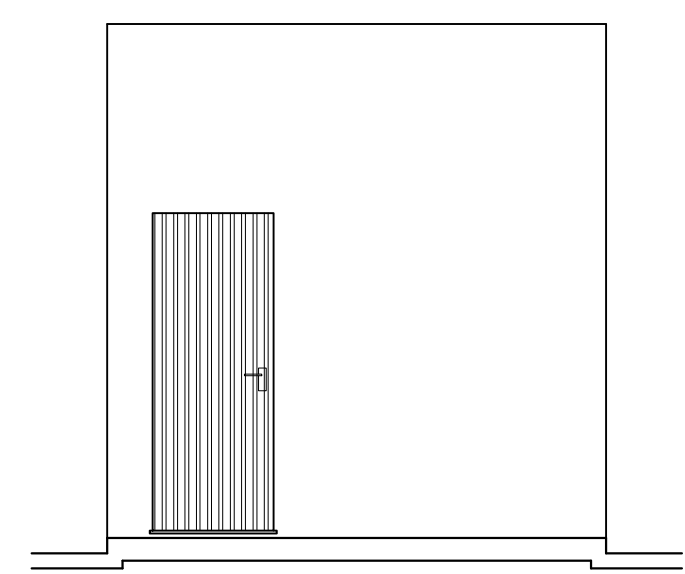
Planta Baixa Casa do Lixo
Escala 1:50



Cobertura
Escala 1:50



Corte A-B
Escala 1:50



Fachada Frontal
Escala 1:50

PRÓPRIETÁRIA:			
VCA Morel Elson IV Empreend. Imob. SPE Ltda.			
PROJETO ARQUITETÔNICO			
CONDOMÍNIO			
DONA MIRAI			
GUARITA, SANITÁRIO, QUIOSQUE E CASA DO LIXO			
LOCALIZAÇÃO:	Nº DA FOLHA:	REVISÃO:	DATA:
AV. PROJETADA, SN	13/15	00	JUN / 2022
GLEBA D2 E GLEBA C			
BARRIO UNIVERSIDADE			
VITÓRIA DA CONQUISTA - BA			
DESENHO:	PROJETO E RESPONSÁVEL TÉCNICO:		
Arthur Soares (77) 9 8139 5875			
Rafael Amorim (77) 9 8877 4388			
PEDRO DURVAL RIZZO ARAÚJO			
ENGR. CIVIL			
CREA 92.101D-BA			
REVISÃO:	MODIFICAÇÕES:	DATA:	RESPONSÁVEL:
01	EMISSÃO INICIAL	27/06/2022	ARTHUR
02	ALTERAÇÃO DE PROJETO	28/10/2023	PALOMA LIMA
FOLHA 02 DE 118,90 x 84,10 cm			